

# Parent/Carer Presentation

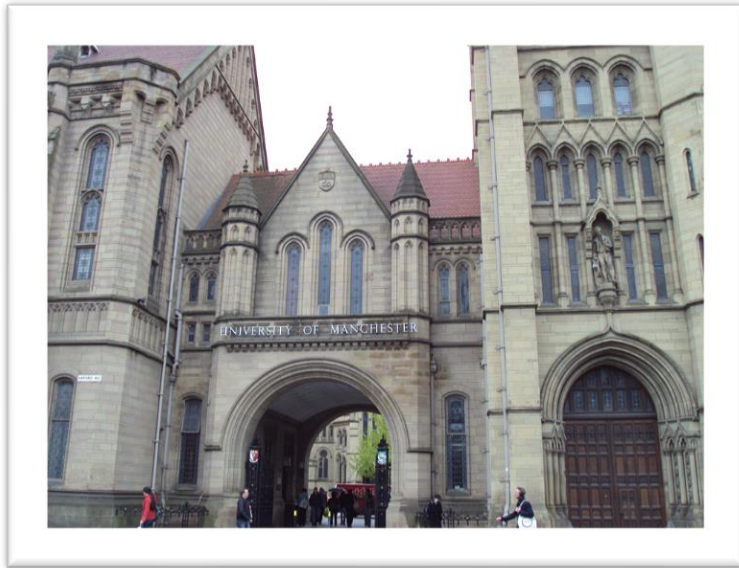
Parents' Guide to Higher  
Education



# What we'll be covering

- What is Higher Education?
- Understanding your options
- Why GCSEs matter
- Why consider HE?
- Thinking Careers
- 'My journey into HE'

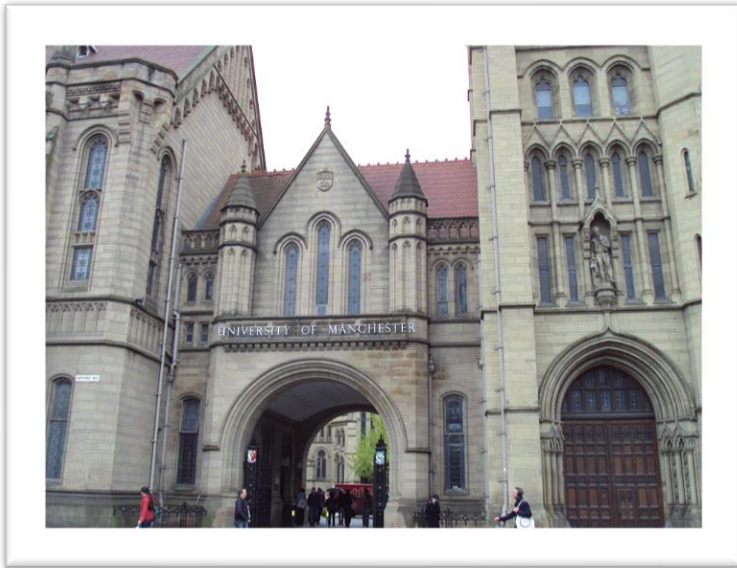
# What is HE?



**University**

- From age 18+ (if Level 3 qualifications completed)
- Most popular and traditional route into higher education
- Majority study for 3 years full time for an undergraduate degree

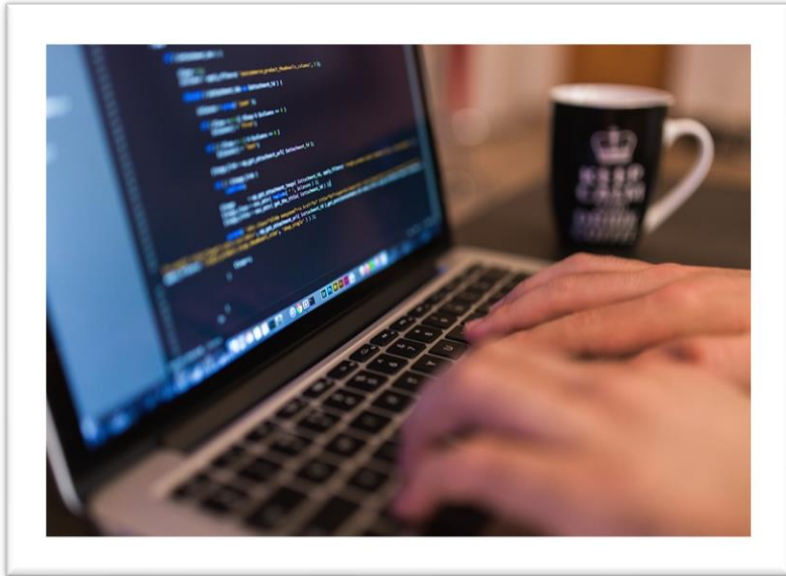
# What is HE?



**University**

- 35,000+ courses
- You need a degree for some professions – any guesses?
- Tuition Fees

# What is HE?



## Degree Apprenticeships

Vocational alternatives,  
combine work and study

Pathways that are specific to  
careers

Often take more than three  
years to complete

Competitive and offered in  
limited subject areas

# What is HE?



**College with  
HE Courses**

- Alternative to University
- May suit those wanting to stay close to home/study in a smaller environment
- Qualifications offered include foundation degrees, HNDs, and undergraduate degrees

# Importance of GCSEs

How can my GCSEs affect my future?

The sixth form or college you go to

Influences the qualifications you take next



Your career prospects

The HE institutions you can apply to

Could be used to assess your eligibility for a HE course

# Understanding your Options

Entry requirements

Routes into professions



I think I might be interested in HE – what do I need to consider?

Where and what to study

Living away vs. commuting

Completing Level 3 qualifications  
e.g. A levels, T levels, BTECs



# Understanding your Options

## A-Levels

- Most common route to University
- Exam based
- Typically x3 subjects but can be combined with a BTEC qualification
- May need certain subjects
- Extended Project Qualification

## BTECs and other Diplomas

- Vocational qualifications
- Coursework and practical assessments. Circa 30% exams
- Flexible, with mandatory and optional units
- Some BTEC subjects to go from 2025

## Apprenticeship

- Earn as you learn
- Ideal for learners who have clear career path in mind
- Must pass assessments
- Check the qualification contained
- Can progress to higher or degree apprenticeship

## T-Levels

- Technical qualification
- Developed with employers to plug skills shortages
- 80% classroom. 45 day placement.
- By Sept, 22, 90+ T Levels being taught in GM

# T Levels in the region

## Access to Music Ltd

Digital

## Ashton Sixth Form (4)

Digital, Business, Education & Childcare

## Bolton College (23)

Business, Construction, Education and Childcare, Digital, Engineering and Manufacturing, Health, Science  
\* Transition Year

## Oldham College (11)

Business, Education and Childcare, Construction, Health, Digital, Legal and Finance,

## Bury College (7)

Business, Digital, Health, Education and Childcare, Engineering and Manufacturing

## Hopwood Hall (7)

Construction, Digital, Health, Education and Childcare, Science

## Trafford College Group (Stockport) (1)

Accounting, Building Engineering Services, Science

## Tameside College (2)

Education and Childcare, Health

## Manchester College (16)

Business, Health, Construction, Education and Childcare, Digital, Engineering and Manufacturing  
\* Transition Year

## Salford City College (2)

Health Digital Production & Design

## Trafford College Group (Cheadle) (1)

Education and Childcare,

## Trafford College Group (Stretford) (23)

Digital Support Services,



## Wigan & Leigh College (10)

Construction, Digital, Education and Childcare, Engineering and Manufacturing, Health, Science

## Oldham Sixth Form (5)

Accounting, Digital, Health, Science, Education and Childcare

Information correct as of 01/04/2022

# Why consider HE?



**Higher Education has the power to be  
transformative**

## Why consider HE?



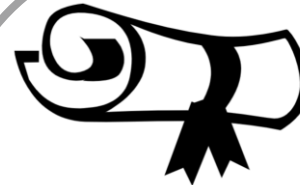
Route to higher  
earnings



Work placements



Advantage in fast  
changing job  
market



HE qualification  
required for  
some careers

**Higher Education can advance your  
career**

- Importance of higher level skills to access well-paid professions
- Reskilling and retraining becomes a 'norm'
- More higher education via the workplace (e.g. higher apprenticeships)

## Labour Market Information

\*LMI obtained from the Office for National Statistics and Gov.uk. Last updated January 2020

### Greater Manchester LEP

Wigan, Bolton, Bury, Salford, Rochdale, Oldham, Tameside, Manchester & Stockport

#### Employment



UK - 76.3%  
LEP - 76.2%

16-64 year old population = 1,790,400

#### Unemployment



UK - 3.8%  
LEP - 4.8%

#### Salary



UK Average - £30,414  
LEP Average - £28,402

#### Self-Employment



183,000 people in the region are self-employed

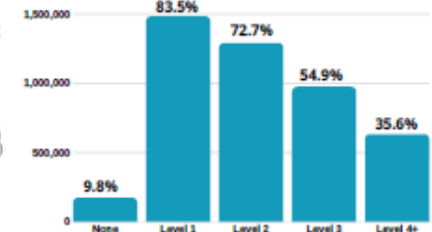
#### Growth by job sector by 2022

-  I.T and Cyber Security
-  Health and Social Care
-  Support/Customer Services
-  Professional Services
-  Management and Directors



#### Qualification levels

1,291,600 people have at least a level 2 qualification such as GCSEs or an NVQ.



#### Where do people work right now?

##### Most jobs

-  Wholesale & Retail - 224,000 (16.8%)
-  Health & Social Care - 159,000 (11.9%)
-  Administration - 142,000 (10.7%)
-  Science & Technology - 121,000 (9.1%)
-  Education - 114,000 (8.6%)

##### Fewest jobs

-  Arts & Entertainment - 29,000 (2.2%)
-  Real Estate - 23,000 (1.7%)
-  Electricity, Gas & Air - 12,000 (0.9%)
-  Water, Sewerage & Waste - 7,000 (0.5%)
-  Mining, Quarrying & Utilities - 350 (0.02%)

##### Did you know...

The NHS is the UK's biggest employer, and the 5th biggest employer in the world!

# *Take away points..*

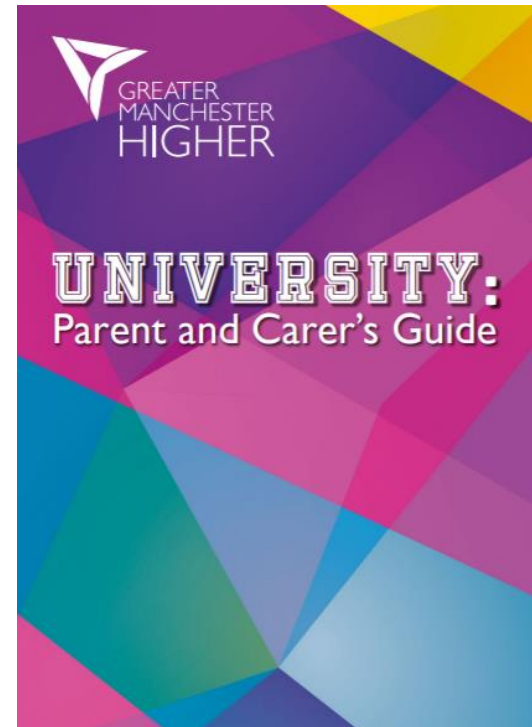
- Work together to make links between GCSEs, your choice of level 3 qualifications and higher education courses
- University is by far the most popular option – but look at the alternative such as higher and degree apprenticeships
- Higher education is an option for everybody – start the conversation with your young person sooner rather than later

## Other resources

- Talk to our graduates on our Ask Us platform:  
[gmhigher.ac.uk/askus/](https://gmhigher.ac.uk/askus/)
- Sign up to our parent/carer newsletter:  
[gmhigher.ac.uk/parents-and-carers/](https://gmhigher.ac.uk/parents-and-carers/)

Have a question about  
higher education?

**Chat to me**



# What did you think?

Let us know what you thought of this session by filling in our short survey!

<https://mmu.onlinesurveys.ac.uk/gmh-2122-parent-carer-he-week-eval>

Or Scan the QR code below:



**Thanks for  
listening – any  
questions?  
gmhigher@mmu.ac.uk**



GreaterMcrHigher



gm\_higher



GM\_Higher