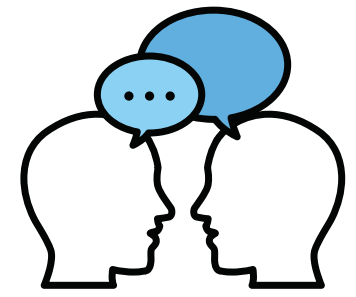




EPHS Teaching and Learning Blog

Mini Whiteboards



WHAT'S THE IDEA?

Mini-whiteboards are an instant formative assessment tool that allow teachers to engage with the thinking, understanding and progress of all students at once.

- There is no more efficient way to find out a) who knows and b) who doesn't have a clue in the class.
- They allow teachers to give immediate feedback – and ask follow-up questions.
- Mini-whiteboards ensure participation from all students.
- They encourage students to forego neatness in favour of risk-taking

HOW CAN I APPROACH THIS?

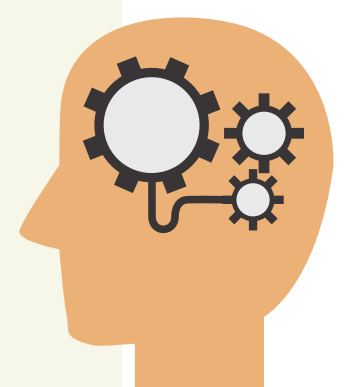
General tips for using mini-whiteboards in lessons:

- Plan questions in advance
- Standardise response format (fill the board, write a letter or 2-3 words)
- Standardise the show me format ("3-2-1 show me!" or "write-hide-show me")
- Scan from front of the class – the power of mini-whiteboards is maximised if you ensure that you are located in a central position, so that you can quickly scan and read the students' boards
- Correct most common errors or misunderstandings straight away in class
- To those who got it right, the question is: 'how did you work it out?' Then to those who were slightly wrong: 'what made you think of that?'



DIFFERENT WAYS OF USING MINI WHITEBOARDS

- Questions about vocabulary/grammar
- Drawing graphs, solving maths problems, preparing outlines
- Drawing circuit/experiment diagrams, developing solution strategies
- Draw the sequence of ...
- Write a definition of ... and then show me
- Think-pair-share
- Multiple choice quizzes and true or false questions



WANT TO KNOW MORE?

Further reading/research

- Sherrington, T. Teacherhead: The number one bit of teaching kit - mini-whiteboards
- Stock, P. Show me: Maximising the use of mini-whiteboards in lessons
- Pembroke, K. Why I love mini-whiteboards in the maths classroom

